



CHECKING OUT Inventories

INVENTORY & CHECK IN REPORT

Address



Compiled at the request of Agent: Dexters

Date of Inspection: (Date)

Inventory clerk: Tyrone Smith

Checking Out (Inventories)

Moore House

279 Church Road

SE19 2QQ

Tel: 07860 819 524

Email:checkingoutinventories@outlook.com



Landlord/Agent Details

Name: Agent- Dexters
 Address: 105 Streatham Hill SW2 4UG
 Contact details: 020 8674 8400

Tenant Details

Name:
 Address:
 Contact details:

Move in inspection

Date of inventory inspection: 30/04/14
 Inspected by: Tyrone Smith
 Move in date: 30/04/14

Move out inspection

Date of inventory inspection:
 Inspected by:
 Move out date:

Photographic/video evidence

Photographic evidence taken Y N
 Video evidence taken Y N

Property to be let. (Address, postcode):

Move in declaration

Property has been inspected on 21/2/14(date), and this document is a true representation of the condition of the property on this date. This has been agreed by both Landlord/Agent and Tenant/s.

Any discrepancies must be reported in writing within 7 days of receiving this inventory.

Landlord/Agent name: Landlord/Agent signature _____

Tenant name : Tenant signature _____

Tenant name Tenant signature _____

Move out declaration

Property has been inspected on ____ (date), and this document is a true representation of the condition of the property on this date.

Landlord/Agent name:

Landlord/Agent signature:

If tenant or tenants representative available

Tenant name: _____

Tenant signature: _____

		<u>Keys</u>			
Move in	Move out	Move in	Move out	Move in	Move out
Number of front door key: 6		Number of Garage keys: 1		Number of window keys: 2	
Number of back door key: 1		Number of shed keys:			

Disclaimer

The report has been prepared to provide a writing recording to the content of the property as well as the condition of the contents and the decorative condition of the areas and space to the extent of the instructing principles instructions. The accuracy of this report is subject to the agreement of the Tenant and Landlord or their respective agents. This report has been compiled by a person who is not a qualified buildings surveyor or health and safety expert or qualified to offer legal advice of a Landlord or Tenant obligation. Neither is the person compiling this report an expert on any materials that maybe found and described in the property including but not limited to woods, fabrics and antiques. This report is not to be used as a definitive description of each and every piece of equipment and furniture in the property or as any type of report such as a property survey or structural survey. Any property in lofts, garages and cellars that are not included in this report are the sole responsibility of the Landlord. This report is not a statement that any items or materials described complies with any regulations.

Electricity

<u>Meter reading:</u>	52 397
<u>Serial number:</u>	K93A02808
<u>Locations:</u>	Located in the cupboard top of the stairs from entrance



Gas

<u>Meter reading:</u>	2367 40
<u>Serial number:</u>	7173514S
<u>Location:</u>	Located in the cupboard top of the stairs from entrance

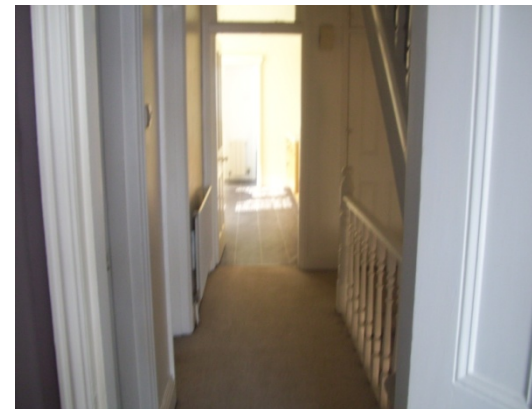
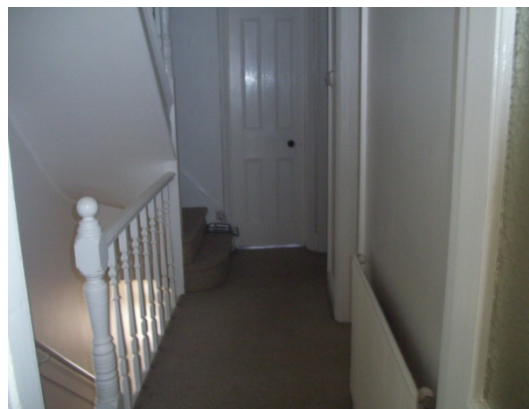
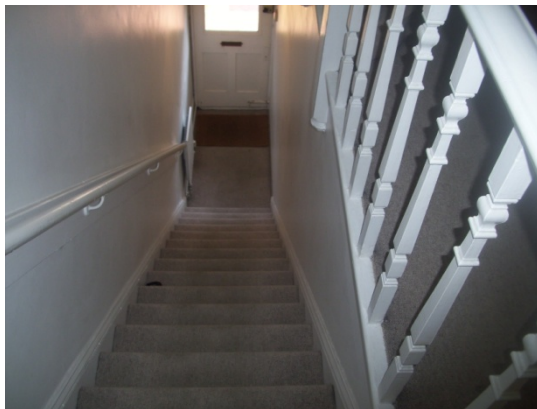


Access keys

<u>Keys giving to tenant at check in</u>	3 Yale keys (Front door)
1 Garden gate key	3 Chub keys (Front door)
1 Back door key	2 Kitchen window keys



Hallway



Inventory/Description	Comments (including number of items if necessary)
Front Door/frame	Painted green wood door,3 window panes(2 pains multi coloured) , Yale lock, chub lock, 2 slide locks, Scuff marks to door(interior) Brass letter box, in tact
Ceiling	Painted white Clean
Wall	Painted white Crack marks located top of radiator, Scuff marks located top of stairs near clothes pegs Otherwise clean
Floor	Cream carpet, worn with time, otherwise clean
2xCoat hooks	Brown wooden base, 10 brass coat hooks(located top of stairs)
Skirting	Painted white gloss, Light dust marks to skirting
Light Fittings/Bulbs	Brown felt covered lamp shade with imprinted snow flake patens, intact
Switches/sockets	Clean In tact
Radiator/Electric	Radiator cap missing (from left side) Green water marks to pipe work,
Cupboard	3 shelf's, 1 Alarm control box, Electric meter, Gas meter
Banister	Painted gloss white, banister post loss(REFER TO PICTURE)

Overall condition of cleanliness	Professional high standard	Professional fair standard	Professional low standard	Domestic high standard	Domestic fair standard	Domestic low standard	Not clean
Level of cleanliness					*		



Comments
Banister post not fitted (located next to box room)



Comments
Radiator cap missing (located near entrance door)

Reception room



Inventory/Description	Comments (including number of items if necessary)
Door	Painted white wooden, lever handle , intact
Ceiling	Paint white Clean
Wall	Paint brown Clean
Floor	Cream carpet, Clean
Curtains/blinds/Windows	Single glazed window, 10panes 2 opening,
Skirting	Painted gloss white Light build up of dust
Light Fittings/Bulbs	Chandelier, Intact
Switches/Socket/s	White facia, clean
Radiator/s	Clean
Chest of draws	Brown wooden, 3 draws, light build up of dust, Intact
Mattress	Single mattress,2 pillows, 1 duvet, intact
Mirror	Brown wooden frame, pull handle ,intact (wardrobe mirror)

Overall condition of cleanliness	Professional high standard	Professional fair standard	Professional low standard	Domestic high standard	Domestic fair standard	Domestic low standard	Not clean
Level of cleanliness		*					



Comments
Chest of draws, In working order, clean



Comments
Wooden unit, intact, clean

Bedroom 1



Inventory/Description	Comments (including number of items if necessary)
Door	Painted white wooden door, clean, black door nob, 1 chub lock, no key present, otherwise intact
Ceiling	Painted white No visible marks Clean
Wall	Painted green, wall paper lifting (located front wall from entrance near white shelf's) No visible marks Clean
Floor	Cream carpet No visible marks Clean
Curtains/blinds/Windows	Double glaze window, 4panes 1 opening, intact White Curtain nets: flower patterned, intact Brown roller blinds: intact
Skirting	Painted gloss white Light build up of dust Otherwise no visible marks
Light Fittings/Bulbs	Multi coloured strip light shade: clean 1 light bulb, intact
Switches/sockets	White facia intact
Radiator/s	Single radiator: green mould to pipe, missing radiator cap, otherwise no visible marks
Bed	White wooden double bed, double mattress, fire label visible, clean, intact
Bedside Table	White wooden bed side table: clean, intact
Mirror	Plastic white frame, clean, intact

Overall condition of cleanliness	Professional high standard	Professional fair standard	Professional low standard	Domestic high standard	Domestic fair standard	Domestic low standard	Not clean
Level of cleanliness		*					



Comments

Mould to radiator, missing cap



Comments

Wall paper lifting (located near shelf's)

Bedroom 2



Inventory/Description	Comments (including number of items if necessary)
Door	Door: Wooden painted white, paint marks to black door Nob, 1 chub lock, no key present, 1 clothes hook painted white, otherwise no visible marks, intact
Ceiling	Painted white No visible marks
Wall	Painted brown No visible marks
Floor	Cream carpet
Curtains/blinds/Windows	Window: 2 panes, 1 opening White net curtains, grey roller blind, clean, intact
Skirting	Painted gloss white, missing skirting board (located left hand side of entrance)
Light Fittings/Bulbs	Chandelier light shade, one light bulb, light build up of dust, intact
Switches/sockets	White Facia intact
Radiator/s	Single radiator, missing valve cap, no visible marks, clean
TV stand	Black wooden, one shelf, clean, intact
Unit	Brown wooden unit , shelf's not fitted, clean (refer to picture)
Extension lead	1 white extension lead, 4 sockets, (not tested)
Curtain rail	1 Black metal curtain rail, intact

Overall condition of cleanliness	Professional high standard	Professional fair standard	Professional low standard	Domestic high standard	Domestic fair standard	Domestic low standard	Not clean
Level of cleanliness					*		



Comments
Missing skirting board



Comments
Paint to door knob

Bedroom 3



Inventory/Description	Comments (including number of items if necessary)
Door	Door: Wooden painted white, chrome lever handle, intact
Ceiling	Painted white No visible marks
Wall	Painted brown no visible marks
Floor	Brown carpet, clean
Curtains/blinds/Windows	Window: 5 pane, 1 opening, 1 screw lock, brown blinds, clean, intact
Skirting	Painted gloss white, clean
Light Fittings/Bulbs	Intact
Switches/Socket	White Facia intact
Radiator/s	Single radiator, clean
Bed	White metal poster bed, mattress, mattress cover, fire label visible, clean, intact
Chest unit	White chest unit, clean, intact
Mirror	White wooden frame, clean, intact

Overall condition of cleanliness	Professional high standard	Professional fair standard	Professional low standard	Domestic high standard	Domestic fair standard	Domestic low standard	Not clean
Level of cleanliness		*					



Comments
Condition of bed: clean, intact



Comments
Condition of chest unit, clean, intact

Kitchen



Inventory/Description	Comments (including number of items if necessary)
Cooker/hob	Built in Silver electric cooker, Clean, Intact
Door	Painted white wooden door, 2 glass panels Intact, crack to frame glass panel (located top of door)
Ceiling	Painted white, black patches to ceiling in various places
Wall	Painted magnolia, No visible marks
Floor	Grey tile effect laminate floor, clean
Curtains/blinds/Window	Window: 2 panes/ 1 opening PVC -Intact
Skirting	Painted gloss white, clean
Light Fittings/Bulbs	Silver metal light shade, clean, intact
Switches/Socket	White facia, clean, intact
Base Unit	Light brown base unit, chrome handles, clean, intact
Sink/Taps/Draining board	Clean In working order
Work surface	White work surface, clean
Wall Units	Light brown unit, chrome handles, frosted glass panels, clean, intact
Fridge Freezer	fridge freezer(White)(make: Tricity Bendix) clean, intact
Kettle	White Kettle, silver hooked handle, intact
Toaster	White and chrome, clean, intact
Washing machine	White, clean
Dishwasher	Silver, (make: hot point), grime to interior (refer to picture)
Table / chairs	White wooden circle shape fold up table, 4 brown wooden chairs, 4 brown and white patterned cushions, 4 dark brown fold up chairs clean, intact
Dustbin	Sliver, 1 silver handle, clean, intact

Overall condition of cleanliness	Professional high standard	Professional fair standard	Professional low standard	Domestic high standard	Domestic fair standard	Domestic low standard	Not clean
Level of cleanliness					*		



Comments
Condition of table and chairs, clean, intact



Comments
Rust and grime to interior door of dishwasher



Bathroom

Inventory/Description	Comments (including number of items if necessary)
Door	Painted white wooden door, white door knob, 2 chrome clothes pegs, intact
Ceiling	Painted White No visible marks
Wall	Cream tiles, clean
Floor	Cream tiles Clean
Curtains/blinds/Window	Window: 2 Panes/1 opening, single glazed frosted glass, 2 chrome lever handle, intact
Toilet	White Plastic seat-Chrome push button flusher ,intact, clean
Light Fittings/Bulbs	Intact 1 light bulb
Towel rail	Chrome rail, intact
Toilet roll holder	Chrome, clean, intact
Bath/Shower	Cream tiles around bath, chrome shower head, clean, intact,
Sink/Tap/	Clean, in working order
Soap rack	Chrome shelf's, rust to shelf (refer to picture)
Bath mat	Cream bath mat, clean
Dustbin	Chrome foot lever bin, rust to lid, otherwise intact

Overall condition of cleanliness	Professional high standard	Professional fair standard	Professional low standard	Domestic high standard	Domestic fair standard	Domestic low standard	Not clean
Level of cleanliness		*					



Comments
Rust to Soap holder otherwise intact



Comments
Rust marks to bin lid



Comments
Condition of sink, clean



Comments
Condition of bath, clean

Hallway



Reception Room



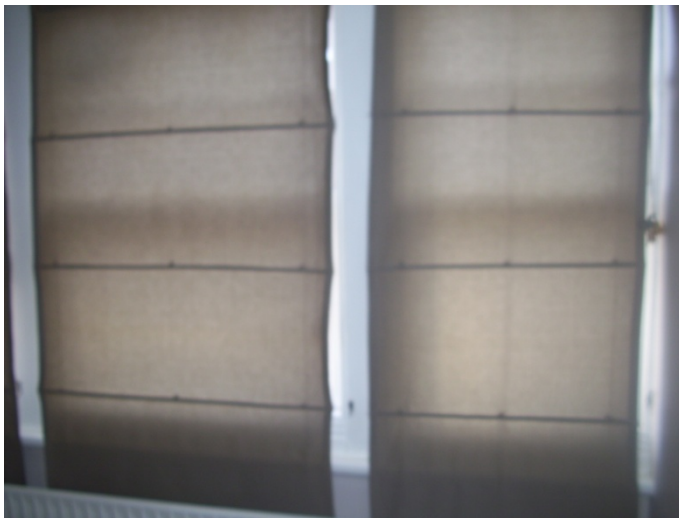
Bedroom 1



Bedroom 2



Bedroom 3



Kitchen



Kitchen, part 2

